



# TWISTLOCK – CONTAINER- & CLOUD-BASED SECURITY SOLUTIONS

Our partner Twistlock is the leading provider of container and cloud-based cyber security for businesses using dockers, kubernetes, serverless and other native cloud technologies. Twistlock integrates with any CI tool and registry and runs wherever you need to run your native VMs, containers and cloud applications. Twistlock...

- Offers a single solution for vulnerability management, runtime defence, compliance, CI/CD integration, cloud-native firewall and access control.
- Supports DevOps and continuous integration processes, making it ideally suited for agile software development.
- Continuously monitors your entire cloud environment (like firewalls, only better adapted to the cloud environment) and creates full transparency in terms of cyber security.
- Automates policy creation and protects your cloud applications throughout their lifecycle.
- Provides excellent graphics capabilities.

## **Vulnerability Management**

Vulnerability management identifies and eradicates vulnerabilities throughout the entire application lifecycle and prioritises risks in the cloud environment. Developers need to integrate vulnerability management into their continuous integration processes, whereas security teams, on the other hand, want continuous monitoring, detection and risk mitigation for containers, images and servers. Twistlock assists efficient vulnerability management by applying a risk assessment to weaknesses that have been detected.

## **Access Control**

Access control is powerful for cloud workloads and cloud native applications. Companies can use Twistlock to protect hosts, dockers and kubernetes, and to integrate with identity and access management tools.

## **Container Compliance**

Twistlock helps organisations monitor, fulfil, and enforce compliance for container and cloud environments. Twistlock is the lead author of the NIST Container Security Guide (SP 800-190) and a contributor to the CIS benchmarks for dockers and kubernetes. This means that Twistlock is well aware of just how important container security is. Companies use the Twistlock Compliance Explorer to guarantee standard configurations, best security practice, the use of trusted registries and recommended deployment templates.

## **Continuous Integration / Continuous Development (CI/CD)**

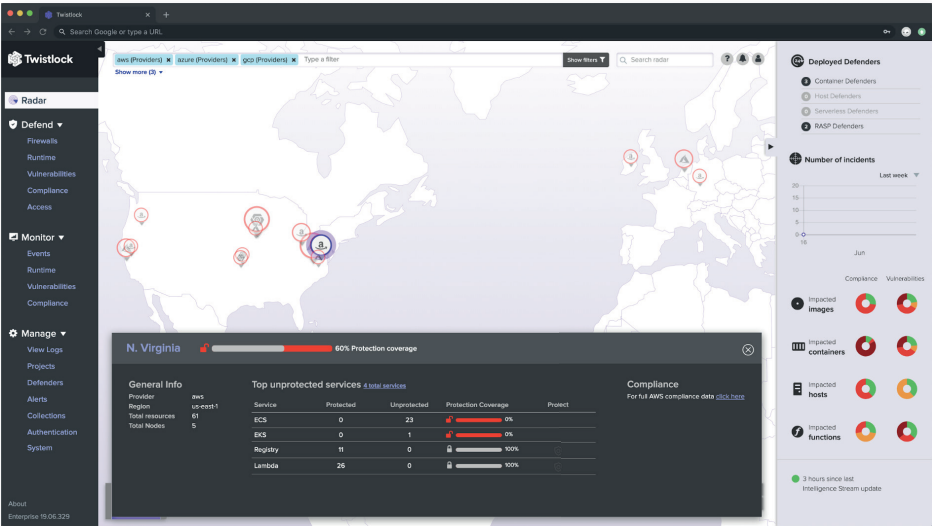
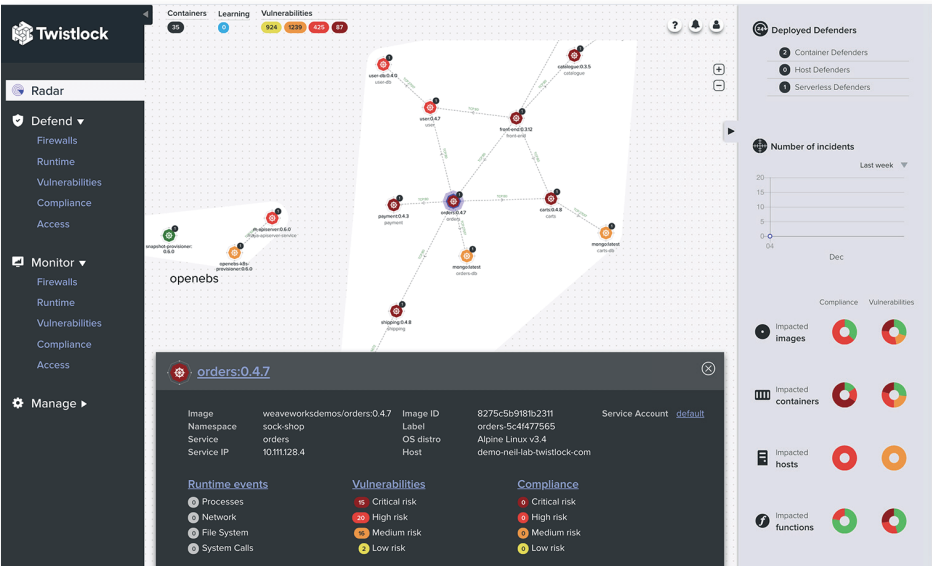
Twistlock integrates security into CI processes and workflows. This means that any problems can be detected and solved before they are rolled out to production. Developers can see vulnerability status for every build without the need to launch a separate tool. Security teams can define policies that serve as quality gates. This ensures that only software that is compliant is deployed.

## **Cloud Native Firewall**

The Twistlock platform provides Layer 4 and 7 firewalls that automatically learn the network topology of applications and provide application-specific segmentation of your micro services. This means you can combat new threats in the cloud.

Runtime Defence

Runtime defence includes network and application firewalls as well as runtime security for hosts, containers and serverless computing. Machine learning protects the runtime environment, detects threats and anomalies and assists with incident response by processing forensic data.



## Twistlock provides you with the following benefits:



### Automation

Twistlock scales security through automatic baselining of the normal behaviour of an application, including communication with other cloud services. “Allow rules” runtime models are generated on the basis of this information. APIs are available for integration with existing tools.



### Visibility

Twistlock provides dynamic views of applications, components and security status. Vulnerabilities and compliance issues are assessed. Every host and container has a real-time “flight data recorder”.



### Prevention

Twistlock automatically blocks any abnormal behaviour of processes, network traffic and activities. You can only deploy compliant applications from trusted sources. Twistlock enforces “least privilege” networking and micro-segmentation in your environment.



### Compliance

Twistlock has over 400 out-of-the-box configurations and policy controls to help you comply with many common standards such as GDPR and PCI. A guide is available for PCI to help you with PCI compliance.

More about Twistlock at  
[www.infoguard.ch/en/twistlock](http://www.infoguard.ch/en/twistlock)

#### InfoGuard AG

Lindenstrasse 10  
6340 Baar / Switzerland  
Phone +41 41 749 19 00

INFOGUARD.CH

